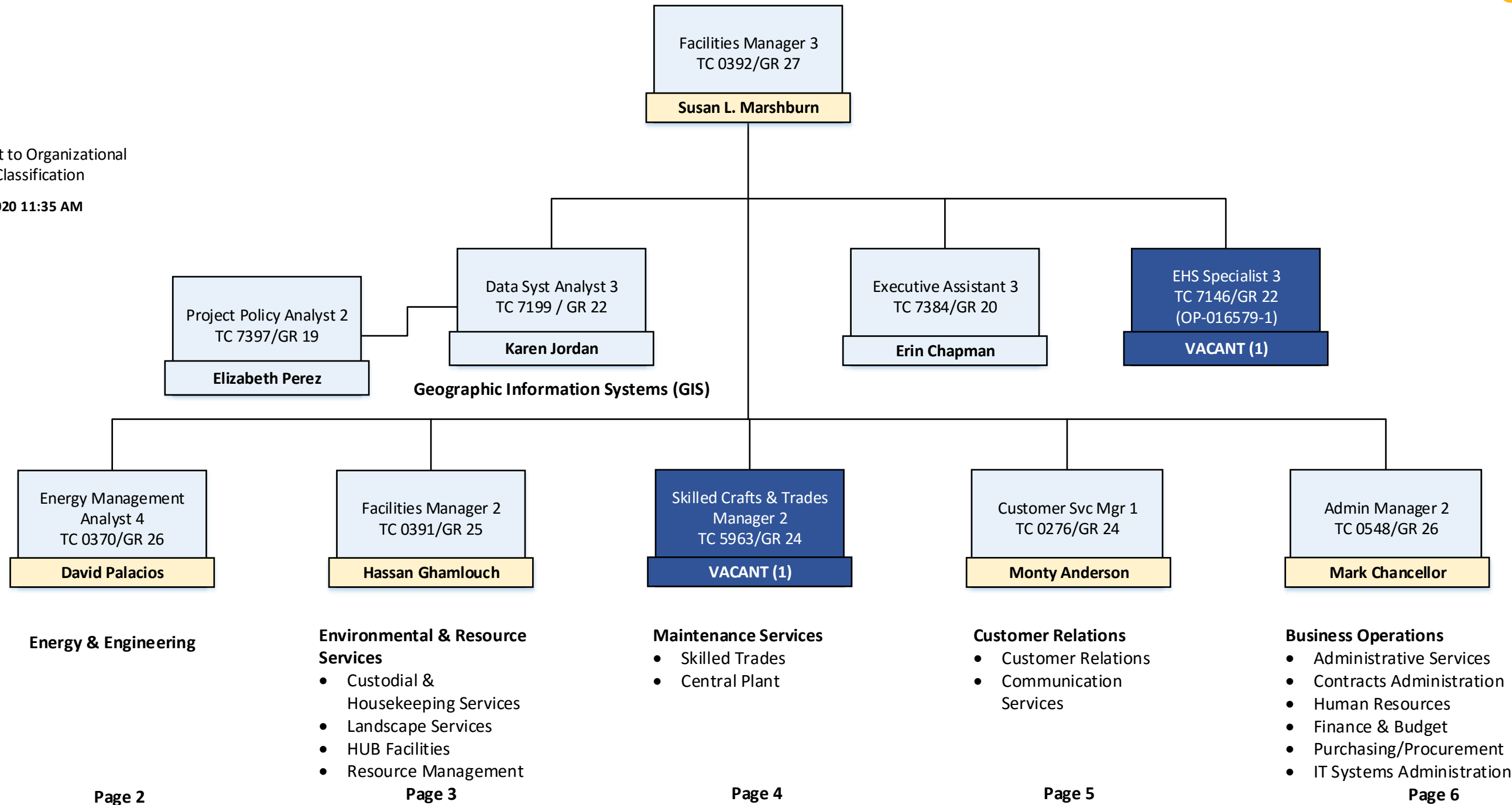


**KEY**

- Vacant FTE
- Filled FTE
- Adjustment to Organizational Structure/Classification

Updated 2/03/2020 11:35 AM




**Summary of Facilities Services Organization**

FS Unit	# OF VACANCIES	FILLED FTE	TOTAL FTE COUNT
FS Administration	2	2	4
Geographic Information Systems	0	2	2
Environmental & Resource Services	33	209	242
Energy & Engineering	0	2	2
Maintenance Services	4	103	107
Customer Relations	1	7	8
Business Operations	3	12	15
<b>FS Grand Totals</b>	<b>43</b>	<b>337</b>	<b>380</b>

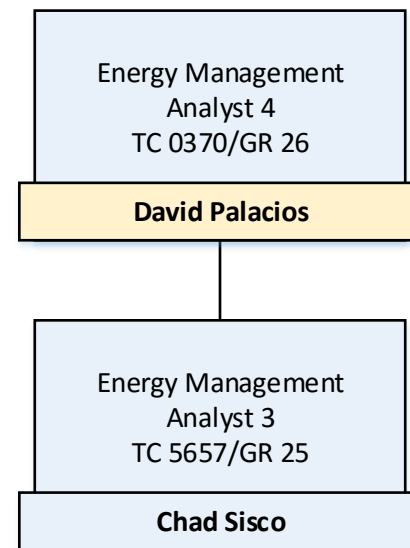
**KEY**

 Vacant FTE

 Filled FTE

 Adjustment to Organizational  
Structure/Classification

Updated 2/03/2020 11:35 AM



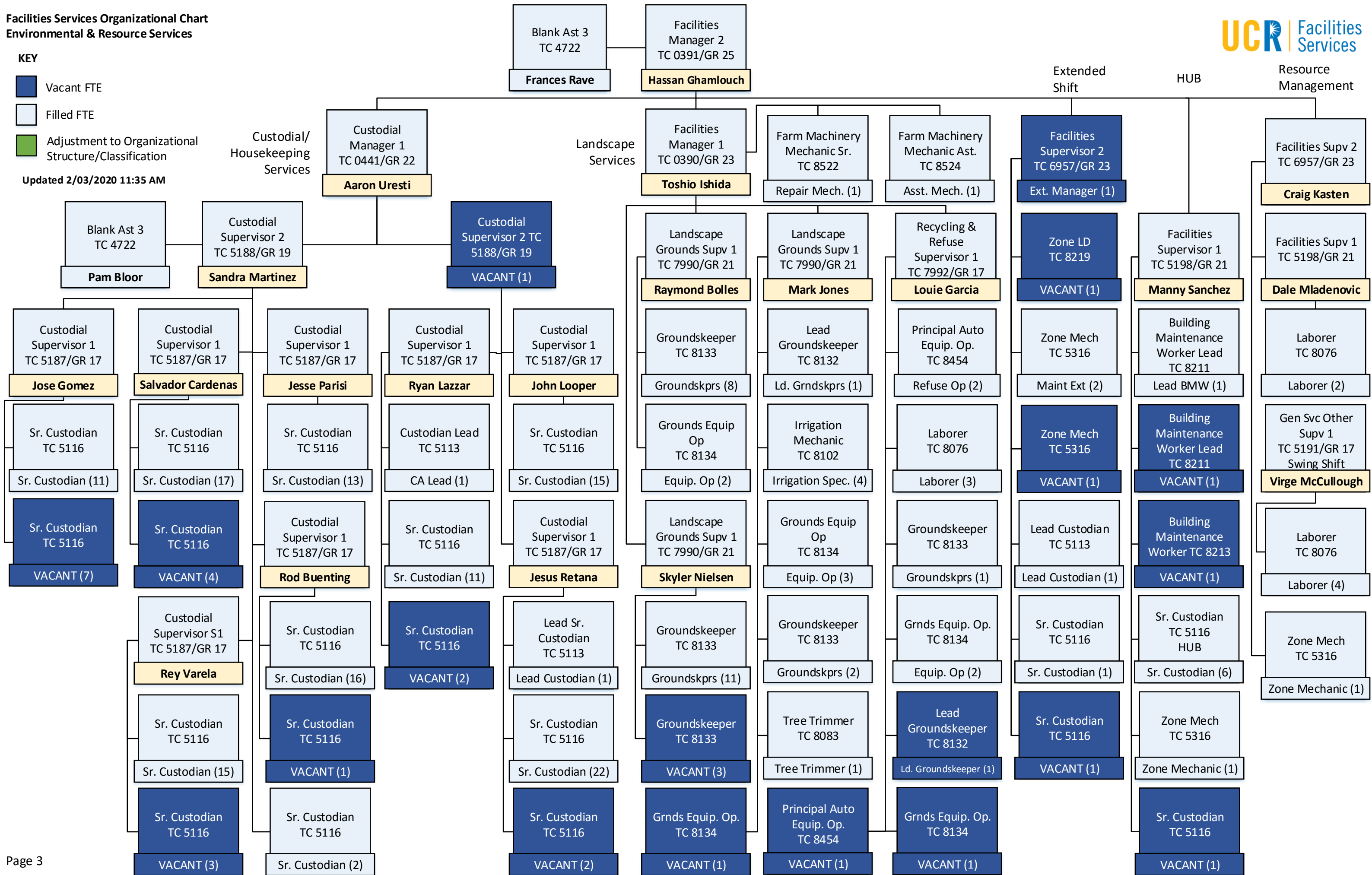
**Facilities Services Organizational Chart  
Environmental & Resource Services**



**KEY**

- Vacant FTE
- Filled FTE
- Adjustment to Organizational Structure/Classification

Updated 2/03/2020 11:35 AM

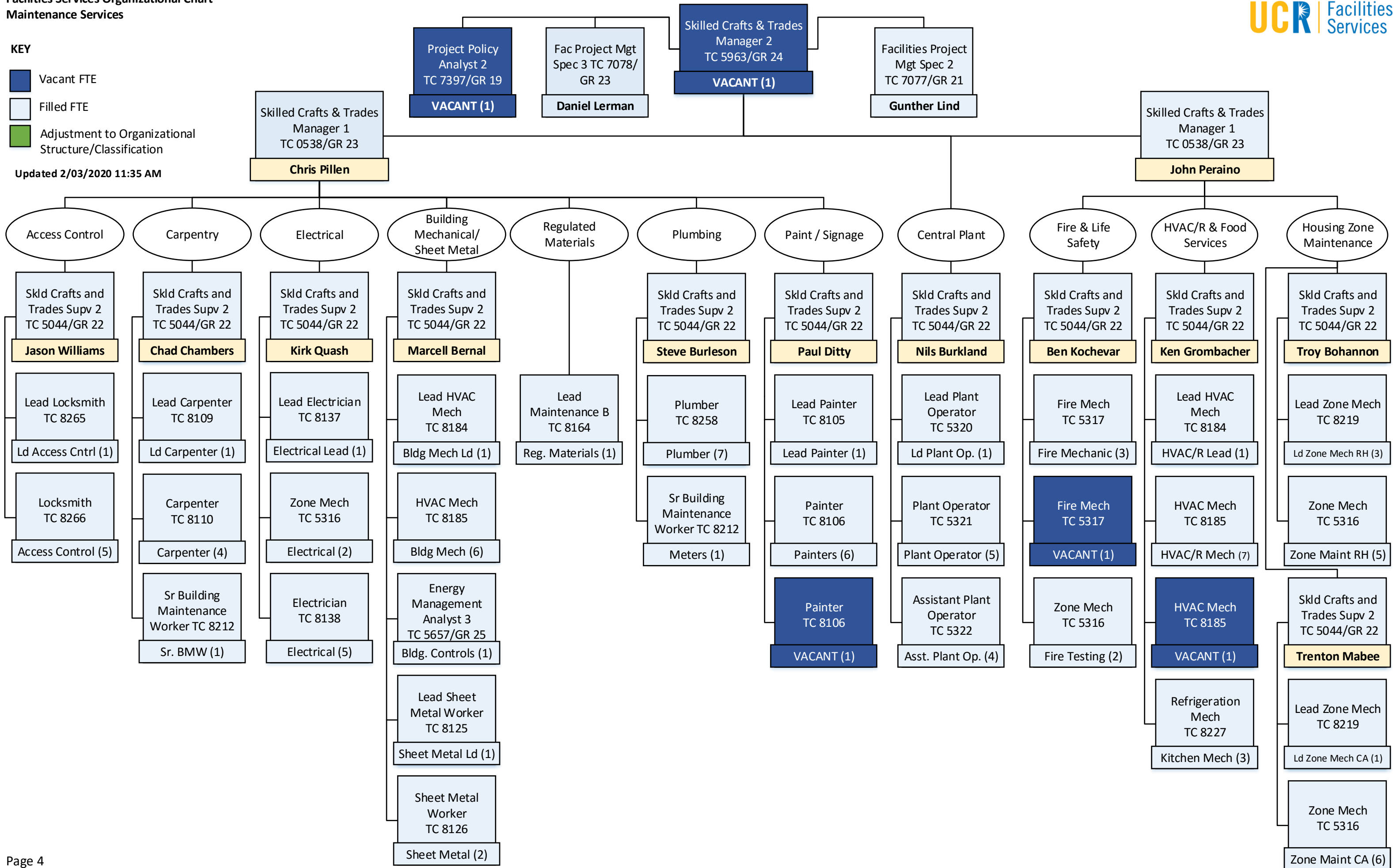


**Facilities Services Organizational Chart**  
**Maintenance Services**

**KEY**

- Vacant FTE
- Filled FTE
- Adjustment to Organizational Structure/Classification

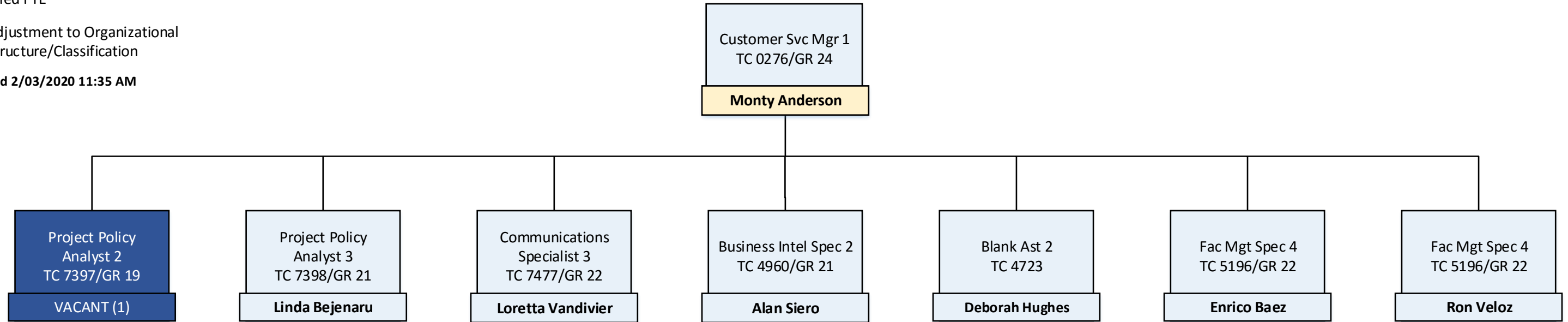
Updated 2/03/2020 11:35 AM



KEY

- Vacant FTE
- Filled FTE
- Adjustment to Organizational Structure/Classification

Updated 2/03/2020 11:35 AM



**Facilities Services Organizational Chart  
Business Operations**

**KEY**

- Vacant FTE
- Filled FTE
- Adjustment to Organizational Structure/Classification

Updated 2/03/2020 11:35 AM

**Funding Notes**

- \* FTE split between Planning, Design & Construction Budget and FS Budget
- \*\* FTE captured under Planning, Design & Construction Budget
- \*\*\* FS Contract Employee
- \*\*\*\* MOU with Central Procurement

