

FACILITIES FOCUS

ASSET • Central Plant • Client Support Services • Energy & Engineering • Project Management
Custodial & Resource Services • Landscape Services • FS Administration • Maintenance Services

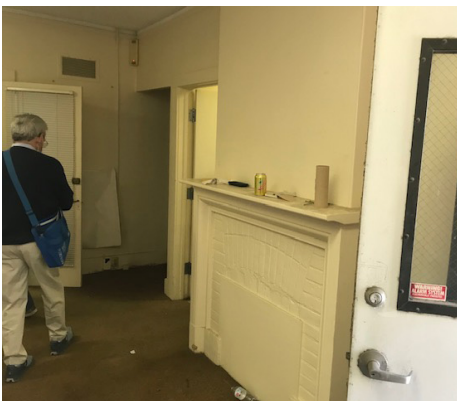
MAY 2026

HISTORIC COTTAGE GETS MODERN MAKEOVER AT UCR

Facilities Services renovated the University Cottage, built in 1917 and one of UC Riverside's oldest buildings. Originally part of the Citrus Experiment Station, it was one of three, small residential cottages near the Barn. This project included vital updates, such as replacing the roof and restoring the cottage's architectural features while maintaining its historical integrity. The UCR Retirement Center will soon occupy this revitalized space, serving the retiree community. The new gray and white color scheme matches the adjacent Barn, enhancing the campus and supporting emeriti members.



The restored exterior of the University Cottage features fresh paint, a new roof, and an inviting porch that highlights its historical charm. (UCR/Erin Chapman)



A before photo reveals the cottage's dated interior with yellow walls, worn carpet, and a covered fireplace. (UCR/Cristina Otegui)



The updated interior showcases a revitalized fireplace, new doors, refreshed wall color, and modern lighting, merging classic appeal with contemporary convenience. (UCR/Erin Chapman)

EMPLOYEE OF THE MONTH

Braulio Estrada Lopez
Locksmith

ORGANIZATIONAL UPDATES

SKILL UP WITH NEW TRAINING TOOL

We are excited to introduce a new training tool to enhance your maintenance skills: Interplay Learning, an interactive platform for user engagement. This opportunity is now available to all FS staff. Ask your supervisor for more information on requesting a license. Stay tuned for upcoming virtual reality sessions with Interplay!

CONGRATS TO SALVADOR RIVERA!

Staff Assembly honored **Salvador Rivera** as a **Winter Quarter Get Recognized Award Winner** for his outstanding contributions at the Student Health Clinic Center. His dedication and service have enhanced the health care experience for students, reflecting a commitment to their well-being. Salvador's efforts show a high standard of care and demonstrate a genuine passion for supporting the campus community.

KUDOS FROM THE WELL

The Well expressed gratitude to **Bill Avila** and **Andy Herrera**, building maintenance workers, and the HUB maintenance team for their exceptional support during an unexpected department move. The team provided boxes, helped dispose of trash, and assisted with logistics while responding with professionalism despite challenges, including a leak.

FS Warehouse Updates

NEW HOURS

8:00-8:30 AM	10:30-11:00 AM
12:00-12:30 PM	1:30-2:00 PM

REMINDER

If you need a hat, beanie, or other PPE visit the FS Warehouse first.

REFRESH WITH A NEW WATER BOTTLE

Central Plant, Custodial, and Resource staff will receive new water bottles from their supervisor. Maintenance and Landscape staff can exchange old bottles for new ones at the FS Warehouse.



Celebrating FS's Impact at Spring Splash

FS played a vital role in the success of Spring Splash 2026, marking the highest attendance since returning post-COVID. Our electrical team, including **Olinsser Valdivia**, **Eric Hernandez**, **Jeremy Horvath**, and **Sean Meyers**,

collaborated seamlessly with the Associated Students Program Board (ASPB) to ensure a safe and smooth event for our students. We look forward to continuing this teamwork in the upcoming Block Party Concert this fall.

Earth Day Highlights Facilities Services Initiatives

Our team hosted a booth in observance of Earth Day at Pierce Lawn. We engaged with students by offering snacks and giveaways. At the same time, we

shared important information about our Zero Waste initiatives, custodial efforts, and landscape, maintenance, and refuse management programs.

Richard Cordova, plumbing supervisor, **Sandra Martinez**, custodial services manager, and **Kirk Quash**, electrical supervisor, engage with students at the Facilities Services booth during Earth Day.
(UCR/Erin Chapman)

